

Traffic Information Automesse Salzburg 2013 – EMMA Eurofinals

A) Speed Limit on High Way: 130 km/h

B) No more than 0,5 % of Alcohol in your blood if you are the driver, please

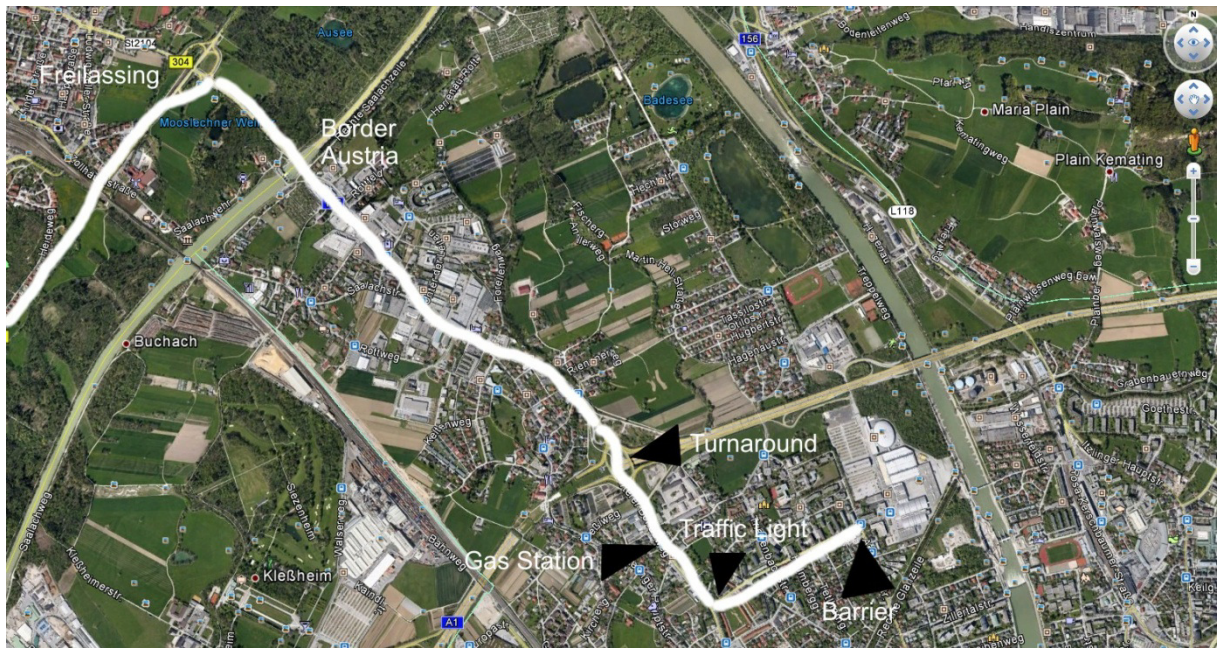
C) You might need a “Vignette” – Price for 10 days = 8,30 €

If you drive on the Austrian High Way please don't forget to buy the "Vignette" / sticker for paying the Austrian motorway, on the last petrol station in Germany or immediately on the Austrian border. Cars are checked very often in Salzburg if this "Vignette" sticks on your windscreen. There should be available a sticker for 10 days at each petrol station. You will need the motorway for about 10 km. If you don't want to use the motorway, you have to leave it already in Germany before the border.

For all competitors driving to Salzburg via Germany – There is a way to avoid the “Vignette”

To save the Pay toll for Austrian Highway leave the exit Bad Reichenhall/Freilassing just before the Austrian Border. In the turnaround follow the signs Freilassing. After about 12 KM you will be guided to Salzburg. From the Border there to the expo it is about 3.5 KM. After entering Austria just go straight ahead until you reach a Turnaround. Don't follow the signs to “Messe” because it will guide you to the Highway. Follow Stadtmitte/Bahnhof. After leaving the turnaround go straight for about 500m and after passing a Gas Station turn left. The just 400 m straight and you will reach the Messe Salzburg. At the barrier push the bottom to get a ticket and drive into the area. Park your car and go to the EMMA Desk in hall 6 and get your pass as well as tickets, sticker etc.





D) Information regarding Winter Tire – Rule in Austria:

Studded winter tires are allowed in Austria during winter months. There is a speed limitation on motorways of 100km/h if you are using them.

In Austria all cars must have winter tires, or carry snow chains, between 1 November and 15 April.

This means:

If you are involved in an accident without winter tires ... very bad luck and the opponent will have good chance that you will get full responsibility for the accident even if you haven't caused the accident.

If the weather/street conditions are winter like, and you get caught by Police using non-winter-tires they are allowed to give you a ticket, even if you have not caused any accident or dangerous situation.

So when it's already spring at end of March there should be no major problem if you are not able to use winter tires.

Salzburg is on about 420 m above sea-level. There is a chance from let's say more than 50% that the weather conditions are already spring-like. But nevertheless it might happen, that there will be some snow on streets, and in this case your car **MUST** wear winter tires.

If you go via Germany you have only 3,5 Kilometers from the boarder to the expo by using normal street (not motorway) via Freilassing.

Information regarding Winter Tire Rule in Germany

If you drive through Germany

In November 2010, responding to the court's decision, the Bundestag, Germany's parliament, passed a new federal law that is much more specific about winter tires. It also doubles the fines for drivers caught without snow tires or who have an accident in winter conditions without snow tires on their vehicle.

Von O bis O

Most German motorists have long known the old rule of thumb for putting snow tires on the car: "von O bis O." The term "from O to O" is short for "from October to Easter" (von Oktober bis Ostern). It is a recommendation that one should make the change from regular tires to snow tires in October, and leave them on until Easter.

The new German law does not set any time limits, but it does clearly state that under icy conditions (bei Glatteis, Schneeglätte, Schneematsch, Eis- und Reifglätte) you must not drive without snow tires on your vehicle. So, since it's difficult to predict the weather, for all practical purposes, the old "von O bis O" rule still applies. (In Austria, winter tires are mandatory from November 1 to April 15.)

The new law also spells out what a "winter tire" is. Specifically, it is an **M+S-Tire**, a mud-and-snow tire that has an official **M+S** (Matsch und Schnee) marking on it. (M+S tires do not have to be "winter" tires. All-year or all-weather M+S tires also qualify.)

Fines

If the police catch you driving in winter conditions without M+S tires, you'll have to pay a fine (Bußgeld) of 40 euros – plus a point against you in Flensburg.* If you are involved in an accident or you block traffic in icy conditions without **M+S tires**, the fine goes up to 80 euros and a point against you in Flensburg

Further problems

If you have an accident under icy or winter conditions it could be that insurances will not pay for if you don't use the M+S tires. It could be that you will get full responsibility for the accident even if you haven't caused the accident.